

NEW ORLEANS, LA
May 23-25

EEFA + NEWHAB
CONVENING 2017

WORKING TOGETHER

TO BUILD COLLECTIVE POWER



TABLE OF CONTENTS

Welcome!	2
PLACE, PEOPLE, POWER	3
Special Thanks!	4
Staff Contact Info	4
Schedule Snapshot	5
Tuesday May 23 PLACE: New Orleans - Resiliency and Renewal	8
Wednesday May 24 PEOPLE : Learning and Taking Action Together	12
Thursday May 25 POWER: Moving Forward Collectively	21
Local Dining	22
Local Amenities	23
Hotel Conference Facilities	23
Getting Around Town	24
Acronyms	25
Storytelling!	25
Jemez Principles for Democratic Organizing	26
What's on Your Mind	28

WELCOME!

Thank you for joining us for several days of inspiration and movement building.

Our time together is sure to be jam packed with connection, camaraderie and creative solutions. I invite you to fully immerse yourself in this experience. Your peers have carefully crafted our time together to intentionally break down barriers to old ways of thinking, deliver actionable best practices, and create a space for breakthrough problem solving.

Have fun. Pace yourself. Make new friends and know that this is your network. Our diverse expertise is NEWHAB's strength and all of us have a part to play in seeing our bold vision realized. What will you do?

Let's go change the world together.

-Faith Graham , Managing Director, NEWHAB

A lot has changed since we were all together in Boston last summer. What has not changed is our collective resolve to protect vulnerable communities. Energy Efficiency for All (EEFA) housing and clean energy partners are helping to ensure that a fair share of energy efficiency investments reach residents of low-income multifamily housing with the goal of creating healthier living environments for all. We have been striving to increase the diversity of our coalitions—not only from a race perspective, but also to build and strengthen our movement by aligning with equity focused, resident-driven and grassroots organizations. We have work to do. **And working together we can build the collective power needed to achieve equitable climate solutions.**

EEFA works in partnership with the Network for Energy, Water and Health in Affordable Buildings (NEWHAB) to help grow and integrate our networks and bring about change on a national scale. We are thrilled that Faith Graham recently joined us as NEWHAB's Managing Director to help increase our connectivity and realize the network's "bold vision."

As we embark on our Annual Convening, I invite you to invoke the principles of partnership that are the foundation of EEFA and NEWHAB and our shared passion for this work. I look forward to working with you all on the next steps of our journey.

~Jennifer Somers, Energy Foundation

PLACE, PEOPLE, POWER

The theme for the NEWHAB + EEFA Annual Convening is “Working Together to Build Collective Power.” Through the collaboration of over 40 planning committee members and in partnership with our New Orleans local host committee, we have mindfully designed a gathering that will foster relationships across sectors while creating opportunities for both deep learning and problem-solving.

OUR COLLECTIVE GOALS INCLUDE:

- Gather EEFA state partners and NEWHAB members to reflect on current work
- Build connectivity by sharing stories, lessons learned and challenges
- Develop strategies and solutions to address complex problems we can't solve alone
- Vision action steps for beyond the convening that will build collective momentum to address cross-sector issues

EACH DAY HAS A FOCUS:

PLACE (Tuesday): The EEFA Louisiana State Coalition in partnership with local community leaders will ground attendees in history, culture, and context for the opportunities and challenges faced by a community on the frontline of climate change.

PEOPLE (Wednesday): Through discussion and learning exchanges we will develop strategies and solutions to a range of issues.

POWER (Thursday): To close our time together we will focus on collective problem-solving for issues that have surfaced through the convening. Thursday will lay the groundwork for future collaboration, implementation strategies and EEFA+ NEWHAB activities.

This convening is intended to be experiential and participatory, and to provide time to connect with your colleagues and find opportunities to collaborate. Our hope is that our time together will help foster new ideas and augment existing ones to take back to your communities. Thank you for taking the time to be with us.

~2017 EEFA + NEWHAB Convening Planning Team

SPECIAL THANKS!

This Convening would not be possible without the support of dozens of people. Thank you for your time, energy, and wisdom in creating this event!

CONNECTIVITY COMMITTEE

Zack Miller, Clare Rosenberger, Katherine Teiken, Radina Valova

CONTENT COMMITTEE

Annika Brink, Charlie Harak, Dave Farnsworth, Elizabeth Chant, Ellen Tohn, Kenley Farmer, Lauren Asplen, Lauren Ross, Lindsay Robbins, Naomi Mermin, Noah Purcell, Patrick Cicero, Philip Henderson, Sarah Ralich, Stacie Young, Zack Miller

EVENT PLANNING COMMITTEE

ACE Hotel Staff, Kathy Choh, Tiffany Vega-Gibson, Jennifer Somers, Ashley Sparks, Odin Zackman

KEYNOTE COMMITTEE

Elizabeth Chant, Jackie Dadakis, Dave Farnsworth, Jim Grow, Naomi Mermin, Molly Simpson, Radina Valova

MEETING FACILITATORS

Ashley Sparks, Odin Zackman

LOCAL HOST COMMITTEE

Thom Amdur, Logan Burke, Jackie Dadakis, Casey DeMoss, Bruce France, Tessa Hartley, Andreanecia Morris, Madiana Mustapha, Casius Pealer, Nick Slie

NETWORK GUARDIANS

Annika Brink, Abby Corso, Sandy Fazeli, Elizabeth Glynn, Ben Passer, Madiana Mustapha, Ruth Ann Norton, Tom Osdoba, Jogchum Poodt, Dawone Robinson, Clare Rosenberger, Lauren Ross, Katherine Teiken

STAFF CONTACT INFO

In case of emergency please call 911.

In case of logistical and room concerns please contact:

Kathy Choh at 952-456-1763 or Tiffany Vega-Gibson at 504-321-1677

For NEWHAB questions contact Faith Graham at faith@newhab.net.

SCHEDULE SNAPSHOT

All programming at Ace Hotel unless otherwise noted.

Monday May 22

11:00am-1:00pm	Registration Open
4:00pm-7:00pm	Registration Open
5:00pm-6:30pm	Happy Hour Meet and Greet @ ACE Hotel Rooftop Bar

Tuesday May 23

LOCATION: New Orleans - Resiliency and Renewal

8:00am-9:30am	Breakfast in Reception Area @ ACE Hotel
8:00am-3:15pm	Registration Open
9:00am-12:00pm	EEFA Exchange: EEFA Coalition Partners Gathering Location: Barnett Hall
12:00pm-1:15pm	Kick-off Convening Lunch Location: Barnett Green and Music Rooms
1:30pm-3:00pm	Opening Plenary - Working Together to Build Collective Power Location: Barnett Hall
3:00pm-3:30pm	Break
3:30pm-6:30pm	New Orleans Off Site Sessions Buses will depart promptly at 3:30pm. ALL TOURS WILL END AT THE ASHÉ CULTURAL ARTS CENTER FOR DINNER. We will not return to the hotel prior to dinner. <ul style="list-style-type: none">A. New Orleans East: Power and PeopleB. Solar and RenewalC. Columbia Parc: Holistic InnovationD. Historic TremeE. Housing, Community Development, and Civil RightsF. Energy Consumption and Production: The Impact on the Lower 9th Ward and Chalmette
6:30pm	All Convening Dinner Location: Ashé Cultural Arts Center
9:00pm	Shuttles Return to Ace Hotel

SCHEDULE SNAPSHOT

All programming at Ace Hotel unless otherwise noted.

Wednesday May 24

PEOPLE : Learning and Taking Action Together

7:00am-8:30am	Breakfast (available until 8:30)
7:30am	Challenge Groups Breakfast Meetups Ad Hoc Breakfasts NEWHAB + EEFA 101 and Q and A (open to all) Location: Barnett Music Room A
8:00am-3:30pm	Registration Open
8:30am-10:00am	Welcome and Plenary: The Federal Landscape Location: Barnett Hall
10:00am	Break
10:30am-12pm	BREAK OUT SESSIONS <ol style="list-style-type: none">1. Multifamily Utility Programs 2.0. Location: Barnett Green Room A2. Case Study on Building the Capital Stack for Affordable Housing Retrofits Location: Barnett Green Room B3. Sharing Power: Solar, Energy Efficiency, Community Collaboration in Hometown America Location: Barnett Music Room A4. Conversations with Owners: What's Next for Energy, Water, and Health in Affordable Buildings Location: Three Keys5. Incorporating Health into Capital Needs Assessments and Green Property Management: Lessons from NYC Location: Barnett Dining Room6. Communities and Careers: Building Job Pathways along with Affordable Homes Location: Barnett Music Room B
12:00pm	Lunch – Regional Lunches Barnett Dining Room: Midwest; Barnett Music Room A: West Coast; Barnett Hall: Northeast, Mid-Atlantic, Southeast

SCHEDULE SNAPSHOT

1:30pm-3:00pm	Energy Equity: Building Community Power Location: Barnett Hall
3:00pm	Break
3:30pm-5:00pm	BREAK OUT SESSIONS <ol style="list-style-type: none">1. Changing Value Proposition of Distributed Energy Resources: Tools, Decision-making, and Equity Considerations Location: Barnett Music Room B2. Financial Innovations in Green Affordable Housing Location: Barnett Green Room B3. Messaging and Narratives: A Work Session Location: Barnett Dining4. Affordable Multifamily Upgrades: A Practitioner's Perspective Location: Barnett Hall5. State Strategies for Health + Energy Interventions in Housing Location: Barnett Music Room A6. A Model Process for Achieving Meaningful Engagement in Energy Planning and Decision-making Location: Barnett Green Room A
5:00pm	Open/Unstructured Time
6:30pm	Dine Arounds Location: Varies

Thursday May 25

POWER: Moving Forward Collectively

7:00am	Breakfast (available until 8:30)
7:30 am	RELAY Informal Breakfast Meeting (open to all) Ad Hoc Breakfasts NEWHAB + EEFA 101 and Q and A (open to all) Location: Barnett Music Room A
9:00am-10:30am	Working Together Workshop: Building Power Moving Forward Location: Barnett Hall
10:30am	Break
11:00am	Closing Plenary: Commitments and Next Steps Location: Barnett Hall
12:00pm	Convening Concludes (lunch available to go)

TUESDAY MAY 23

PLACE: NEW ORLEANS – RESILIENCY AND RENEWAL

8:00am-9:30am

Breakfast in Reception Area @ ACE Hotel

8:00am – 3:15pm

Registration Open in Reception Area

9:00am-12:00pm

EEFA Exchange: EEFA Coalition Partners Gathering

Location: Barnett Hall

EEFA partners will engage in an interactive session to share lessons learned and challenges, build relationships and coalition capacity, and explore action within and across states for the coming year.

12:00pm-1:15pm

Kick-off Convening Lunch

Location: Barnett Green and Music Rooms

Network Guardians and EEFA Team Leads co-host.

1:30pm-3:00pm

Opening Plenary – Working Together to Build Collective Power

Location: Barnett Hall

Welcoming remarks from the Energy Foundation, local New Orleans Host Committee, NEWHAB’s Managing Director Faith Graham, and local EEFA Coalition members. Guest Speakers include Native American Artist and Climate Activist Monique Verdin and Monique Harden from the Deep South Center for Environmental Justice. This participatory session includes an opportunity to connect with other attendees and learn about their current challenges.

3:00pm-3:30pm

Break

3:30pm-6:30pm

Off Site Sessions

Buses will depart promptly at 3:30pm.

ALL TOURS WILL END AT THE ASHÉ CULTURAL ARTS CENTER FOR DINNER. **We will not return to the hotel prior to dinner.**

A. New Orleans East: Power and People (Participants will be riding on a bus for the majority of this session.)

Guides: Erica Buher, Program Director, Vietnamese American Young Leaders Association (VAYLA) and Logan Atkinson Burke, New Orleans Policy Director, Alliance for Affordable Energy.

New Orleans East: Power and People is a driving session focused on the history and recovery of New Orleans East. The East is a frontline community for a proposed new Entergy power plant



Image: Rudy Matthews Photography

and the EEFA Coalition's efforts to advance clean energy solutions. Developed in the 1960's, New Orleans East has historically been the home for many middle and working class African Americans and Vietnamese Americans. Flooding during Katrina and a recent tornado has had devastating impacts on the community. Concurrent to a story of rebuilding and land loss is a story of the power of community organizing. Erica Buher will share stories about the success of organizing to slow Entergy's plans for a new power plant in New Orleans East and provide historical context for the neighborhood. EEFA partner Logan Atkinson Burke guides the conversation.

B. Solar and Renewal (Participants will be riding on a bus for the majority of this session.)

Guides: Karla Loeb, Director of Policy and Government Affairs, PosiGen and Jeff Cantin, President, Solar Alternatives

This driving session through New Orleans East will feature resident stories of individuals who have rebuilt with solar. After Hurricane Katrina, over 1400 homes were outfitted with Solar in New Orleans East by PosiGen. Karla Loeb and Jeff Cantin share the history and context for solar policies and incentives in Louisiana and challenges the solar industry is currently facing. Workforce development is a component for both Solar Alternatives and PosiGen. They will discuss how they recruit and develop qualified workforce. Participants will also see Entergy's singular solar development.

C. Columbia Parc: Holistic Innovation (Participants will spend time walking and gathered in community spaces for this session.)

Guides: Tonya Hall, Senior Community Manager, Columbia Parc; Jacob Peters, Development and Project Assistant, Bayou District Foundation; Terrell Haynes, Kingsley House

Columbia Parc: Holistic Innovation is a deep dive into one particular housing development that was built post-Katrina. Flooding in the Gentilly neighborhood damaged the St. Bernard Public Housing Development. Opened in 2010 on the previous site of St. Bernard Housing, this 53-acre facility provides high quality, affordable workforce housing and “cradle to college” educational resources including the Educare New Orleans early education school, a planned K-8 public charter school and a college prep public high school two blocks away. As part of rebuilding efforts, this public and private partnership has become a model for other communities and is one of 16 Purpose Built Communities across the country. As a mixed income housing community, Columbia Parc used a variety of tax credits and incentives to develop this LEED Silver Sustainable 685 Unit Community.

D. Historic Treme (Participants will be outside walking for the majority of this session.)

Guides: Andrenecia Morris, President/Chairwoman, Greater New Orleans Housing Alliance and HousingNOLA and Alvin Jackson, Founder, Treme Petit Jazz Museum

Established in the 1800s, Treme is America’s first integrated community where free people of color and women were able to buy property and own their own homes. This vibrant community gave birth to the city’s soul and is home to Congo Square—the birthplace of Jazz. Over the years, Treme has changed, but locals have always fought to keep the things that are special about this vibrant community alive. Treme, like the rest of New Orleans, was devastated when Hurricane Katrina flooded the city. This session will be led by community leaders from the Greater Treme Consortium and Treme’s Petite Jazz Museum. These leaders help ensure that Treme’s resurgence will lead to equitable redevelopment that honors the community’s history and embraces the change necessary for the city to survive. This is a 2-hour walking session.



Image: Cheryl Gerber

E. Housing, Community Development, and Civil Rights (This session includes some walking and time outside, most of the session will be spent indoors at a community center.)

Guides: Casius Pealer, Director of the Master of Sustainable Real Estate Development Program, Favrot Professor of Practice at Tulane University, Jackie Dadakis, Managing Partner of GCE Services, Green Coast Enterprises; Nicole Barnes, Executive Director, Jericho Road; Melissa Lee, Senior Advisor for Commercial Revitalization, New Orleans Redevelopment Authority.

There are strong historical connections between commercial economic activity and the struggle for civil rights. This session will highlight sites of importance to this ongoing struggle here in New Orleans, focusing on current redevelopment projects in what were iconic commercial centers for the African American community over 100 years ago, specifically in the Central Business District and the nearby Central City neighborhood. A moderated group discussion will highlight the role of the public sector in broadening the benefits of this redevelopment and will focus on efforts to organize local community groups to ensure their active voice.

F. Energy Consumption and Production: The Impact on the Lower 9th Ward and Chalmette (Participants will be riding on a bus for the majority of this session, it does include some walking outside.)

Guides: Nick Slie, Cultural Worker, Mondo Bizarro; Greta Gladney, Founder, Renaissance Project; Arthur Johnson, CEO of Lower Ninth Ward Center for Sustainable Engagement and Development (CSED); Lloyd (Wimpy) Seringne, Los Islenos Cultural Art Center

This combination driving and walking session provides an introduction to the impact of the intersection between energy production and climate change. Local historians and activists will share stories of how climate change is directly impacting the land and the people who've been living and working in the region. What will a JUST transition mean for those being displaced due to the impact of extractive industries? Session highlights will include the Islenos Cultural Center, the Army Corp's "Great Wall of St. Bernard" and a visit to the Lower 9th Ward's Bayou Bienvenue Wetlands Observatory.

6:30pm

All Convening Dinner*

Location: Ashé Cultural Arts Center

Evening program features video Welcome Remarks from **Georgia Representative John Lewis**, New Orleans poet and activist Sunni Patterson, an excerpt from ArtSpot Productions/Mondo Bizarro's performance Cry You One, Cheryl Johnson, Executive Director of People for Community Recovery, sharing strategies used to ensure the Illinois Future Energy Jobs Act provide significant benefits to low-income communities.

*If you aren't attending an off-site session and would like to join us for dinner, directions to Ashé are available on page 24 Getting Around Town

9:00pm

Shuttles Return to Hotel.

WEDNESDAY MAY 24

PEOPLE : LEARNING AND TAKING ACTION TOGETHER

7:00am-8:30am

Breakfast in Ace Reception Area (available until 8:30)

7:30 Challenge Groups Breakfast Meetups (self-organize)

7:30 Ad Hoc Breakfasts

7:30 NEWHAB + EEFA 101 and Q and A

Join an informal breakfast to learn about NEWHAB and EEFA.

Location: Barnett Music Room A

8:30am-10:00am

Welcome and Plenary: The Federal Landscape

Location: Barnett Hall

Moderator: Deron Lovaas, Senior Policy Adviser for NRDC

We are in a new era of advocating for and defending affordable housing, energy efficiency, and equity given changes in the Federal government. In building our ability to act collectively to ensure the progress we have made, we need to understand the potential changes and new strategies we might pursue to confront threats to the communities we serve. Speakers will share perspectives about what's at stake and provide policy and messaging strategies for work at the state and local level to address challenges.

Speakers: Tyson Slocum, Energy Program Director of Public Citizen, Amy Frykman, Vice President of Resource Media, and Ellen Lurie Hoffman, Federal Policy Director with the National Housing Trust.

10:00am

10:30am-12pm

Break

BREAK OUT SESSIONS

1. **Multifamily Utility Programs 2.0.**

Location: Barnett Green Room A

Moderator: Lauren Ross, Senior Manager, American Council for an Energy-Efficient Economy (ACEEE)

The session will engage participants in a discussion of what constitutes strong, comprehensive multifamily programs that deliver more than just energy savings. We will also consider the factors that contribute to the development of these programs.



Image: Rudy Matthews Photography

A panel of implementers, administrators, researchers, and advocates will review recent program developments across the country and examine program designs, metrics and goals, and advocacy efforts. Session participants will meet in small groups to consider design strategies and performance metrics that can best guide advances in these programs. The session will conclude with participants discussing and recommending actions and policies that can bring about needed program changes.

Speakers: Stefen Samarripas, Local Policy Research Analyst at ACEEE, Amy Dryden, Director of Policy and Technical Innovation, Build It Green, Maria Stamas, Attorney, NRDC, Lindsay Buckwell, Associate Program Administrator, The United Illuminating Company, Andy Brooks, Director of West Coast Operations, Association for Energy Affordability

2. Case Study on Building the Capital Stack for Affordable Housing Retrofits

Location: Barnett Green Room B

Moderator: Molly Simpson, Lead, Green Building & Housing Affordability at the DC Department of Energy and Environment, Urban Sustainability Administration

This session will provide concrete project-based examples, to showcase how clean energy investments can play a vital role in ensuring the financial viability of rehabilitation and retrofit projects. Walking through specific examples and project pro-formas, we will highlight innovative projects in the nation's capital, to offer transferable examples for other communities. These examples include: using PACE to provide 100% upfront capital

and realize immediate paybacks; accessing the economics of solar to subsidize health and safety improvements; and institutional innovations like the DC Sustainable Energy Utility and proposed DC Green Bank. This session will include the national announcement of a new collaborative partnership for green affordable housing preservation with the DC Housing Finance Agency & DC Department of Energy and Environment.

Come ready to dive into a participatory, problem-solving session. Breakouts will walk participants through legal and financial barriers and solutions specific to your market.

Speakers: Bracken Hendricks, President and CEO, Urban Ingenuity and DC PACE Program Administrator, Elizabeth Chant, Principal Consultant, Vermont Energy Investment Corporation (Program Administrator to DC Sustainable Energy Utility), Christopher Donald, Director of Multifamily Lending and Neighborhood Investment, DC Housing Finance Agency, Jeff Lesk, DC Managing Partner, Nixon-Peabody LLP.

3 Sharing Power: Solar, Energy Efficiency, Community Collaboration in Hometown America

Location: Barnett Music Room A

Moderator: Michelle Moore, CEO, Groundswell

The expansion of America's solar marketplace and the diversity of state policy environments create an extraordinary call for community-based innovation that brings the economic benefits home to our neighborhoods and our hometowns. This session will explore how solar + efficiency creates opportunities to share power by organizing neighbors helping neighbors, using examples from the District of Columbia and from rural America. The session will include an interactive charrette that engages session attendees to design a new project to share power in a local community.

Speakers: Reverend Patrick J. Walker, Senior Pastor, The New Macedonia Baptist Church and Debra Marie Roepke, Co-Project Manager, Solar Utility Network Deployment Acceleration (SUNDA), National Rural Electric Cooperative

4. Conversations with Owners: What's Next for Energy, Water, and Health in Affordable Buildings

Location: Three Keys

Moderator: Sarah Ralich, Energy & Construction Manager, ACTION-Housing, Inc.

Hear from developers about their personal experiences incorporating energy and water saving measures in renovations and new construction. They will share lessons learned on real projects from pre-development, construction and through to operation. These personal stories will touch on issues like: the importance of commissioning, what to consider when

transferring the building to management, what can go wrong and how to fix it, renovating with tenants in the building, and tenant education to ensure energy savings are achieved. They will talk through the complexities of getting creative with funding streams to keep all the desired energy efficiency measures in the project, and the hard choices they have made in order to keep the project in budget. This session is a deep dive into the details and challenges developers face. Through roundtable discussions participants will discuss how these issues connect to policy efforts.

Speakers: Trisha Miller, Chief Sustainability Officer, WISHROCK, Mark James, President, Urban Green, Will Bradshaw, President, Green Coast Enterprises

5. Incorporating Health into Capital Needs Assessments and Green Property Management: Lessons from NYC

Location: Barnett Dining

Moderator: Ellen Tohn, Principal, Tohn Environmental Strategies

How we manage our buildings and complete capital needs assessments offer opportunities to create healthier buildings and homes. The Local Initiatives Support Corporation (LISC) & Enterprise Community Partners, two community development intermediaries with a focus on health and affordable housing, are working with NYC health and housing agencies to incorporate health into the Green Physical Needs Assessment used by City housing preservation programs. This new model will help auditors recognize health-related rehab opportunities to inform city and owner decisions. LISC is working with multifamily owners in New York City, the Twin Cities, Detroit and Richmond to support green property and asset management practices that improve energy/water efficiency, reduce air pollutants, and create healthier homes through its Two Shades of Green initiative. We will provide time for small group discussions to share experiences and develop local strategies.

Speakers: Michael Millican, IPM Specialist, New York City Department of Health and Mental Hygiene, Jordana Vasquez, Project Manager of Sandy Multifamily Recovery Programs & Two Shades of Green at Local Initiatives Support Corporation (LISC) New York City, Krista Egger, Director of Green Communities at Enterprise Community Partners.



Image: Rudy Matthews Photography

6. **Communities and Careers: Building Job Pathways along with Affordable Homes**

Location: Barnett Music Room B

Moderator: Lauren Asplen, Director of Healthy Sustainability Programs for Blue Green Alliance

This session will look at several workforce development models that train residents of affordable housing communities with construction skills. We will examine policy levers to create programs, program funding and worker wages, and employer education. We will discuss how these policy levers can be used to develop careers, not just jobs.

Speakers: David Hepinstall, Executive Director, Association for Energy Affordability ; Kris Pottharst, Executive Director of Project Homecoming

12:00pm

Lunch - Regional Lunches

Barnett Dining Room: Midwest;

Barnett Music Room A: West Coast; **Barnett Hall:** Northeast, Mid-Atlantic, Southeast

1:30pm-3:00pm

Energy Equity: Building Community Power

What does energy democracy look like in practice?

Location: Barnett Hall

Moderator: Jacqueline Patterson, Director, Environmental and Climate Justice, National Association for the Advancement of Colored People

The people at the heart of the work we are doing in low-income communities and communities of color across the country are marginalized by a system that doesn't value or include their voice, experience, and leadership. This session will explore what we mean by energy equity, starting with an analysis of race, racism, and power underlying this work. We will provide both stories and approaches for understanding authentic community process and the appropriate role advocates and implementers can play in supporting energy democracy.

Speakers: Colette Pichon Battle, Executive Director, U.S. Human Rights Network, Cecil Corbin-Mark, Deputy Director, WE ACT for Environmental Justice, and Alvaro Sanchez, Environmental Equity Director, The Greenlining Institute

3:00pm

Break



Image: Rudy Matthews Photography

1. Changing Value Proposition of Distributed Energy Resources: Tools, Decision-making, and Equity Considerations

Location: Barnett Music Room B

Moderator: Wayne Waite, Principal, Waite & Associates and Program and Policy Consultant to California AB693 Nonprofit Solar Coalition

Providing energy savings to end-users has been a key consideration in the design of many policies and programs promoting clean energy technologies. However, the policies and program designs that today provide financial benefit to property owners have proven to be less effective in providing comparable economic benefits to residents of multifamily housing. This workshop will use a Moot Court format to present the case for tenant benefit and equity that arise from the installation of site-based multifamily renewable energy systems. Key questions to be considered include:

- What policies and other prerequisites must be in place to allow renters to gain access to, and directly benefit from, clean energy installations?
- Do tenants gain or lose from renewable energy installations and what safeguards are needed to ensure that tenants receive a fair distribution of economic benefits?
- How can property and tenant interests be balanced to enable benefit sharing?

Opening Arguments: Erica McConnell, Attorney; Shute, Mihaly, & Weinberger LLC, Interstate Renewable Energy Council, Stephanie Chen, Energy & Telecommunications Director, The Greenlining Institute, Jim Grow, Senior Attorney, National Housing Law Project

Judge Panel: Trisha Miller, Chief Sustainability Officer, WISHROCK, Housing Commentator; Charlie Harak, Staff Attorney, National Consumer Law Center (NCLC), Policy Commentator

Jury/Expert Witnesses: The audience.

2. Financial Innovations in Green Affordable Housing

Location: Barnett Green Room B

Moderator: Kenley Farmer, Associate Director, DC Department of Energy and Environment

Currently, affordable housing owners and developers face tremendous policy uncertainty. Impending federal changes threaten to decrease the availability of LIHTC equity and other public subsidies. Despite this climate of tightening resource availability, a number of promising innovations in the field of clean energy and efficiency financing offer the potential to pick up the slack by closing shortfalls in capital budgets, and that can be repaid over time through lower operating budgets and utility bills. This session will tap the experience and capacity of CDFIs and other national leaders to showcase a suite of policy measures and programs that are being used today. These strategies include “CivicPACE” finance using special tax assessments and tax-exempt bonds, green banks, and other tools. Discussion will explore how these resources can work with both government-assisted properties and unsubsidized properties.

Speakers: Bracken Hendricks, President & CEO, Urban Ingenuity; Yerina Mugica, Managing Director, Center for Market Innovation, NRDC, Stacie Young, Preservation Compact Director, Community Investment Corporation, and Kim Stevenson, Associate Director Multifamily Housing, Connecticut Green Bank.

3. Messaging and Narratives: A Work Session

Location: Barnett Dining Room

Facilitators: Amy Frykman, Vice President of Resource Media, and Ashley Sparks, Engagement Strategist.

Resource Media will walk participants through a message development exercise using Low-Income Housing Tax Credits (LIHTC) as the focus topic. Participants will walk away from the session understanding how to build a strong, compelling message aimed at a specific decision-maker or audience. This is a hands-on work session for attendees to develop messages and tactics they can use in their current advocacy efforts.



Image: Rudy Matthews Photography

4. Affordable Multifamily Upgrades: A Practitioner's Perspective

Location: Barnett Hall

Moderator: Lindsay Robbins, Senior Advocate, Natural Resources Defense Council

Curious about implementation and hearing from practitioners about the lessons learned, challenges and opportunities related to integrating energy and water efficiency in affordable multifamily buildings? The session will include a presentation focused on case studies and implementation success stories in AMF buildings along with a group discussion to support participants in thinking through considerations to navigate more holistic upgrades .

Speakers: Abby Corso, Chief Program Officer, Elevate Energy and Ed Connelly, President, New Ecology, Inc.

5. State Strategies for Health + Energy Interventions in Housing

Location: Barnett Music Room A

Facilitator: Ruth Ann Norton, President & CEO, Green and Healthy Homes Initiative

This interactive panel session will focus on the intersection of energy, health and housing including: new trends in the integration of health and energy; accessing health care intervention dollars and other innovative financing for the energy sector; new research on non-energy benefits and building the evidentiary case; and what data to collect to support the business case for investments in health and energy interventions. Learn about groundbreaking new programs and innovative financing models in Chicago, Maryland, Memphis, and Oregon among others.

Speakers: Anne Evens, Chief Executive Officer, Elevate Energy, Dr. Bruce Tonn, President, Three³

6. A Model Process for Achieving Meaningful Engagement in Energy Planning and Decision-making

Location: Barnett Green Room A

Facilitators: Lisa Flick Wilson, Director of Energy Equity, Southeast Energy Efficiency Alliance, Seandra Pope, Principal, Rooted Consulting Group, Sabrina Garba, Principal, The Glass Ladder Group

Southeast Energy Efficiency Alliance is currently engaging in a stakeholder engagement process, co-created by Rooted Consulting Group and Glass Ladder Group, to advance inclusion in energy decision making in Georgia. The ARC Engagement Process (Alignment Research Collaboration) is a four-phased approach aimed at identifying what it takes to activate stakeholders and key audiences to increased and meaningful engagement.



Image: Rudy Matthews Photography

The process conducted culturally-focused values assessments of African American, Asian American, Latin American, and Utility/Energy Service Provider cultural groups to assist with generating key principles for engagement. This summer, the process will culminate with the production of a white paper to highlight the results from the research and serve to guide ongoing engagement. This interactive session will share more about the process as well as observations from the research.

5:00pm

Open/Unstructured Time

5:00pm-8:00pm

Wednesdays at the Square

Free public concert at Lafayette Square, one block from the ACE Hotel.

6:30pm

Dine Arounds

Location: Varies

You are responsible for your own meal this evening. Sign-up sheets are available at registration to join your colleagues for a dinner in the neighborhood.

THURSDAY MAY 25

POWER: MOVING FORWARD COLLECTIVELY

7:00am

Breakfast (available until 8:30)

Location: Barnett Reception Area

7:30 RELAY Informal Breakfast Meeting (open to all)

7:30 Ad Hoc Breakfasts

Contact Kathy Choh to organize an informal breakfast meeting

7:30 NEWHAB + EEFA 101 and Q and A

Join an informal breakfast to learn about NEWHAB and EEFA.

Location: Barnett Hall Music Room A

9:00am-10:30am

Working Together Workshop: Building Power Moving Forward

Location: Barnett Hall

How do we take action? Building on the problems surfaced from previous sessions, participants will engage in small facilitated problem-solving sessions to directly address issues that have emerged.

10:30am

Break

11:00am

Closing Plenary: Commitments and Next Steps

Location: Barnett Hall

A range of speakers will offer their synthesis and thoughts on next steps for building collective power across NEWHAB and EEFA, including reflections and commitments from participants in an interactive and action-oriented closing session.

12:00pm

Convening Concludes (lunch available to go)



LOCAL DINING

Central Business District

Domenica (\$\$)

123 Baronne St.
New Orleans, LA 70112
(504) 648-6020

Pho Tau Bay (\$)

1565 Tulane Ave.
New Orleans, LA 70112
(504) 368-9846

Peche Seafood Grill (\$\$\$)

800 Magazine St.
New Orleans, LA 70130
(504) 522-1744

Warehouse District

Mulate's (\$\$)

201 Julia St.
New Orleans, LA 70130
(504) 522-1492

Dragos Seafood Restaurant (\$\$)

2 Poydras St.
Hilton New Orleans Riverside
New Orleans, LA 70140
(504) 584-3911

East Riverside

Nirvana Indian Cuisine (\$\$)

4308 Magazine St.
New Orleans, LA 70115
(504) 894-9797

Baru Bistro & Tapas (\$\$)

3700 Magazine St.
New Orleans, LA 70115
(504) 895-2225

Treme

Dooky Chase Restaurant (\$\$)

2301 Orleans Ave.
New Orleans, LA 70119
(504) 821-0600

Garden District

Commanders Palace (\$\$\$)

1403 Washington Ave.
New Orleans, LA 70130
(504) 899-8221

Rock-N-Sake Bar & Sushi (\$\$)

823 Fulton St.
New Orleans, LA 70130
(504) 581-7253

Marigny

Feelings Cafe (\$\$)

535 Franklin Ave.
New Orleans, LA 70117
(504) 446-0040

Sukho Thai

2200 Royal St.
New Orleans, LA 70117
(504) 948-9309

LOCAL AMENITIES

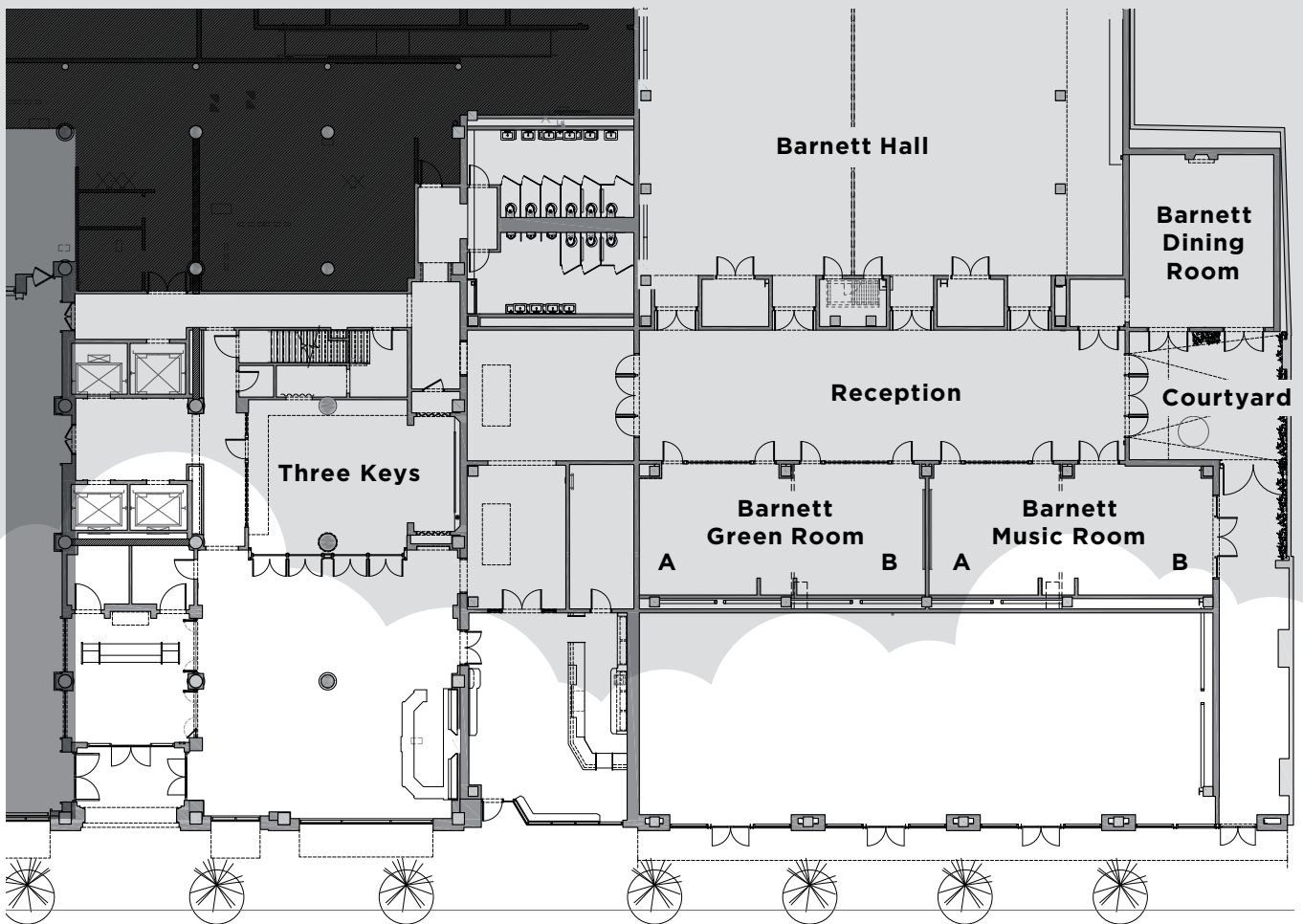
CVS

(near hotel)
939 Girod St. #160
New Orleans, LA 70113

Rouses Market

(local grocery store)
701 Baronne St.
New Orleans, LA 70113

HOTEL MAP



GETTING AROUND TOWN



Ashé Cultural Arts Center

(1.3 miles from the Hotel)
1712 Oretha Castle Haley Blvd.
New Orleans, LA 70113

If you are not going on the off-site sessions and are joining us for dinner please arrive at Ashe no later than 6:30pm. We'd suggest taking a cab/uber/lyft to Ashe from the hotel. You can also take the streetcar from St. Charles to Euterpe (7 stops) and then walk from St. Charles to OC Haley. It's about 3 blocks.

Public Transportation: Streetcars and Buses

The streetcar and bus lines run along St. Charles Ave., one block away from the hotel. Both will take you towards Uptown and one ride costs \$1.25. Pay cash to the driver, or you can purchase a 1-day, 3-day or 5-day Jazzy Pass on the GoMobile app. For maps, schedules and other information, please visit <http://www.norta.com/>.

Pedicabs

Pedicabs operate primarily along the Canal Street downtown corridor and in the French Quarter and nearby Faubourg Marigny and Garden District neighborhoods. The rates per ride are \$5 for the first six blocks and \$1 per block per person after that. All pedicab drivers are licensed by the city, many of whom are also licensed tour guides.

Uber / Lyft

Uber and Lyft both operate within the city with fares ranging from \$3-\$10.

STORYTELLING

We want to hear from you! Do you have a success story or project you'd like others to know about. Call into the EEFA Storybank Hotline! You can call 24/7. 910-408-2612.

EEFA is working to archive and organize stories to support advocacy and coalition building efforts. After the convening you'll get an update on these efforts. For questions about the Storybank please contact Ashley Sparks at ashleyasparkles@gmail.com.

ACRONYMS

AMF	Affordable Multi-Family Housing
AMFEE	Affordable Multi-Family Energy Efficiency
BBC	Better Buildings Challenge
BOD	Building Owner Demand
CDFI	Community Development Financial Institutions
CEIP	Clean Energy Incentive Program
CPP	Clean Power Plan
EE	Energy Efficiency
EJ	Environmental Justice
HFA	Housing Finance Agency
HUD	U.S. Department of Housing and Urban Development
LEAPSource	Online repository for articles, forums, and other information relevant to NEWHAB
LIHTC	Low-Income Housing Tax Credit
LIMF	Low-Income Multi-Family
NEB	Non-Energy Benefits
QAP	Quality Allocation Plan
QCI	Quality Control Inspection
RE	Renewable Energy
RGGI	Regional Greenhouse Gas Initiative
SPARCC	Strong, Prosperous, Resilient Communities Challenge

JEMEZ PRINCIPLES FOR DEMOCRATIC ORGANIZING

Meeting hosted by Southwest Network for Environmental and Economic Justice (SNEEJ), Jemez, New Mexico, Dec. 1996.

Activists meet on Globalization

On December 6-8, 1996, forty people of color and European-American representatives met in Jemez, New Mexico, for the “Working Group Meeting on Globalization and Trade.” The Jemez meeting was hosted by the Southwest Network for Environmental and Economic Justice with the intention of hammering out common understandings between participants from different cultures, politics and organizations. The following “Jemez Principles” for democratic organizing were adopted by the participants.

#1 Be Inclusive

If we hope to achieve just societies that include all people in decision-making and assure that all people have an equitable share of the wealth and the work of this world, then we must work to build that kind of inclusiveness into our own movement in order to develop alternative policies and institutions to the treaties policies under neoliberalism. This requires more than tokenism, it cannot be achieved without diversity at the planning table, in staffing, and in coordination. It may delay achievement of other important goals, it will require discussion, hard work, patience, and advance planning. It may involve conflict, but through this conflict, we can learn better ways of working together. It’s about building alternative institutions, movement building, and not compromising out in order to be accepted into the anti-globalization club.

#2 Emphasis on Bottom-Up Organizing

To succeed, it is important to reach out into new constituencies, and to reach within all levels of leadership and membership base of the organizations that are already involved in our networks. We must be continually building and strengthening a base which provides our credibility, our strategies, mobilizations, leadership development, and the energy for the work we must do daily.

#3 Let People Speak for Themselves

We must be sure that relevant voices of people directly affected are heard. Ways must be provided for spokespersons to represent and be responsible to the affected constituencies. It is important for organizations to clarify their roles, and who they represent, and to assure accountability within our structures.

#4 Work Together In Solidarity and Mutuality

Groups working on similar issues with compatible visions should consciously act in solidarity, mutuality and support each other's work. In the long run, a more significant step is to incorporate the goals and values of other groups with your own work, in order to build strong relationships. For instance, in the long run, it is more important that labor unions and community economic development projects include the issue of environmental sustainability in their own strategies, rather than just lending support to the environmental organizations. So communications, strategies and resource sharing is critical, to help us see our connections and build on these.

#5 Build Just Relationships Among Ourselves

We need to treat each other with justice and respect, both on an individual and an organizational level, in this country and across borders. Defining and developing "just relationships" will be a process that won't happen overnight. It must include clarity about decision-making, sharing strategies, and resource distribution. There are clearly many skills necessary to succeed, and we need to determine the ways for those with different skills to coordinate and be accountable to one another.

#6 Commitment to Self-Transformation

As we change societies, we must change from operating on the mode of individualism to community-centeredness. We must "walk our talk." We must be the values that we say we're struggling for and we must be justice, be peace, be community. This and other environmental justice documents can be downloaded from: www.ejnet.org/ej/



energyefficiencyforall.org

#EEFANEWHAB2017



ELEVATE ENERGY
Smarter energy use for all



ENERGY EFFICIENCY FOR ALL